

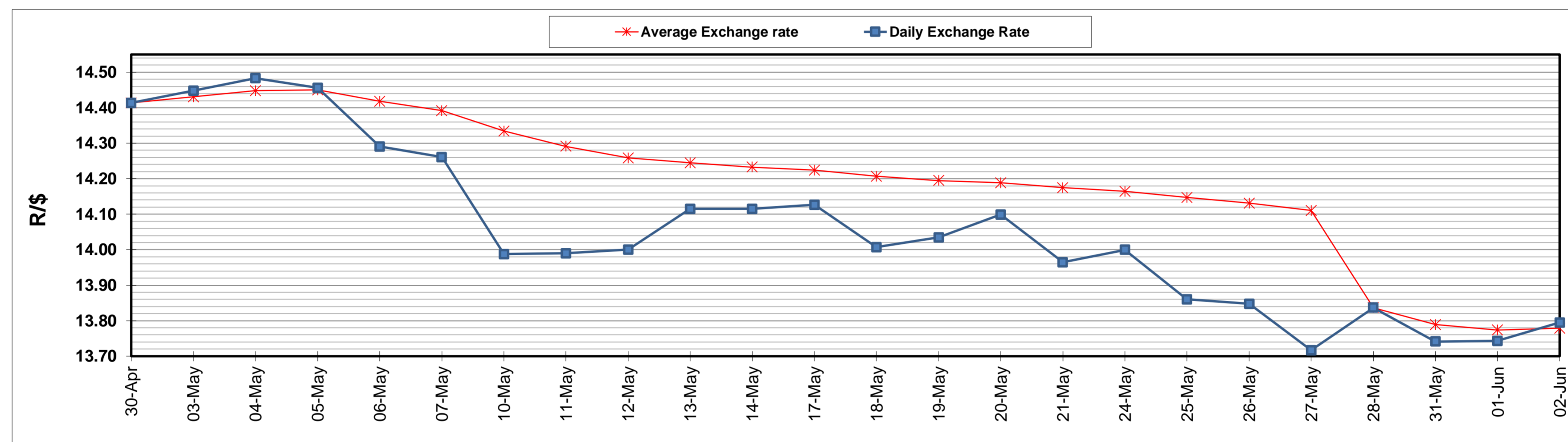
	PETROL 95 ULP	PETROL 93 ULP & LRP	DIESEL 0.05%	DIESEL 0.005%	ILL. PAR.
GAUTENG PUMP PRICE (SA c/l) AS FROM 02/06/2021	1,713.000	1,691.000	-	-	-
WHOLESALE PRICE (SA c/l) AS FROM 02/06/2021	-	-	1,466.620	1,471.020	877.488
SINGLE NATIONAL MAXIMUM RETAIL PRICE	-	-	-	-	1,102.000
BASIC FUEL PRICE - 02/06/2021 (SA c/l)	711.580	702.806	695.207	699.058	676.189
PRESS RELEASE CONTRIBUTION TO BFP 02/06/2021 - 02/06/2021 (SA c/l)	717.170	705.170	679.630	684.030	664.128
UNIT OVER/(UNDER) RECOVERY - 02/06/2021 (SA c/l)	5.590	2.364	(15.577)	(15.028)	(12.061)
AVERAGE BASIC FUEL PRICE 28/05/2021 - 02/06/2021	709.692	700.389	686.289	690.689	667.146
AVERAGE UNIT OVER/(UNDER) RECOVERY 28/05/2021 - 02/06/2021	14.979	12.281	(21.659)	(22.409)	(18.018)

ANALYSIS MOVEMENT OF AVERAGE OVER/(UNDER) RECOVERY

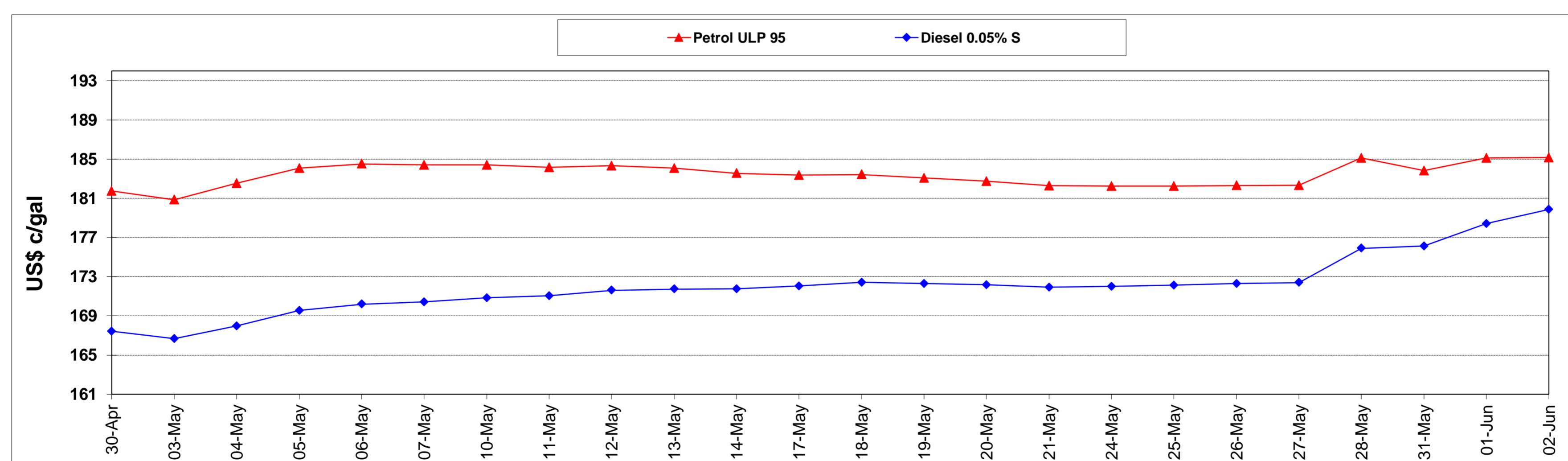
	PETROL 95	PETROL 93	DIESEL 0.05%	DIESEL 0.005%	ILL. PAR.
- MOVEMENT IN INTERNATIONAL PRODUCT PRICES	(2.122)	(4.595)	(38.195)	(39.051)	(34.093)
- MOVEMENT IN EXCHANGE RATE	17.100	16.876	16.536	16.642	16.075
AVERAGE UNIT OVER/(UNDER) RECOVERY 28/05/2021 - 02/06/2021	14.979	12.281	(21.659)	(22.409)	(18.018)

R/\$ EXCHANGE RATE - (R/\$13.7950- 02/06/2021)

EXCHANGE RATE USED IN BASIC FUEL PRICE



INTERNATIONAL PRODUCT PRICES OF BASKET USED IN BASIC FUEL PRICE



BASIC FUEL PRICE IN SA CENTS PER LITRE

